

20'HCOS- Hazardous Cargo Container
(With Steel Grid Floor & Large Vents & Drainage Valves)

Rear End Door



Front End Wall



Side Wall



Side Door



View in 45 Degrees (1)



View in 45 Degrees(2)



View in 45 Degrees (3)



View in 45 Degrees (4)



Roof



Base Structure



Rear End Door Open With 270 Degrees Capacity



Side Door Open With 270 Degrees



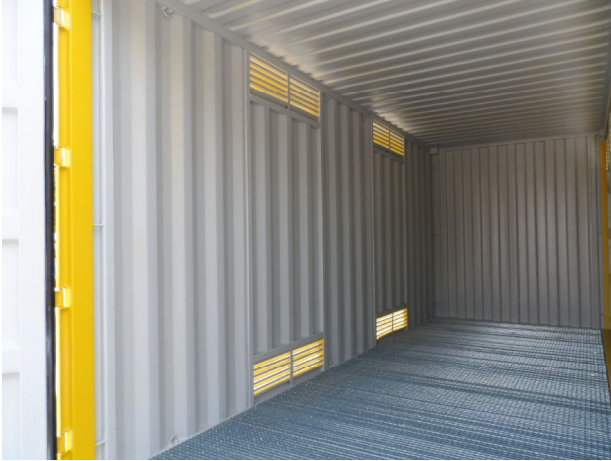
All Door Open



Steel Grid Floor



Interior Side Wall



Interior Rear End Door



Interior Side Door



Total 3 pcs Drainage Valves



Valve In Closing Condition



Valve In Opening Condition



Door Panel With Special Decal



CSC Plate For Hazardous Container



Dimension And Ratings(20’HCOS)

External Dimensions:

Length:6058mm/Width:2438mm/Height:2896mm

Internal Dimensions:

Length:5898mm/Width:2287mm /Height:2600mm

Rear End Door Opening Dimensions:

Width:2226mm/Height:2492mm

Side Door Opening Dimension:

Width:5846mm/Height:2479mm

Internal Cubic Capacity:

35.1 Cubic Meters

Bund Capacity: 2500 L

Ratings:

Max.Gross Weight: 12000 kgs

Max.Payload: 8650 kgs

Tare Weight: 3350 kgs