

40' High Cube OPEN SIDE (CPI)

Right Side Doors With Full Side Access



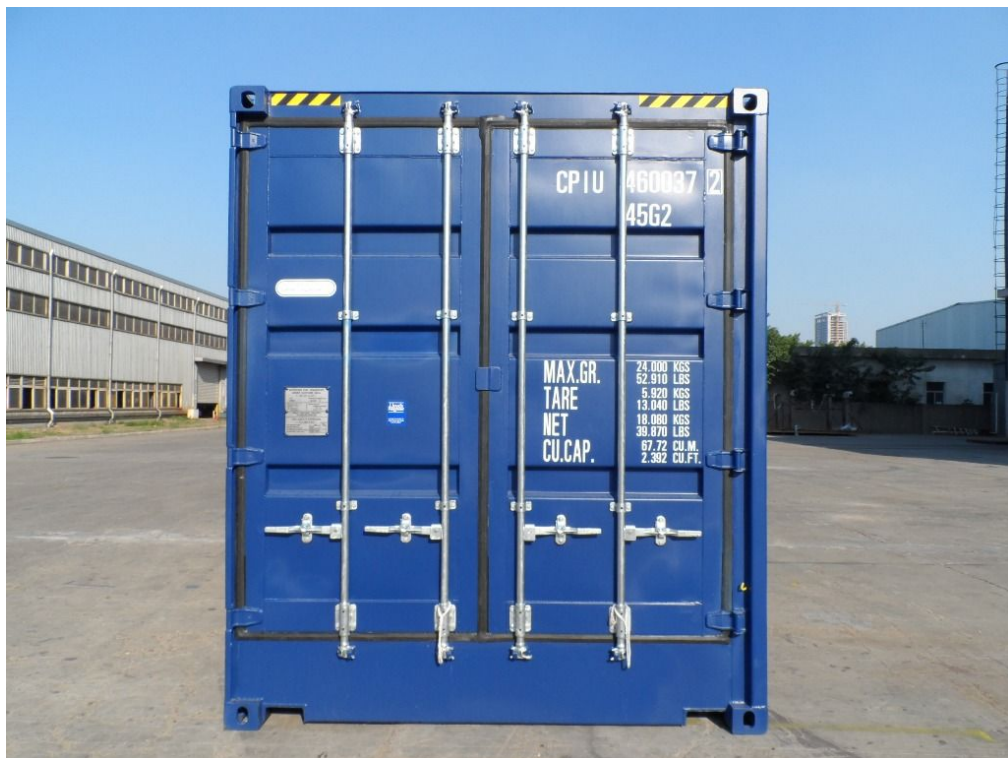
Left Side Wall With 4 Vents



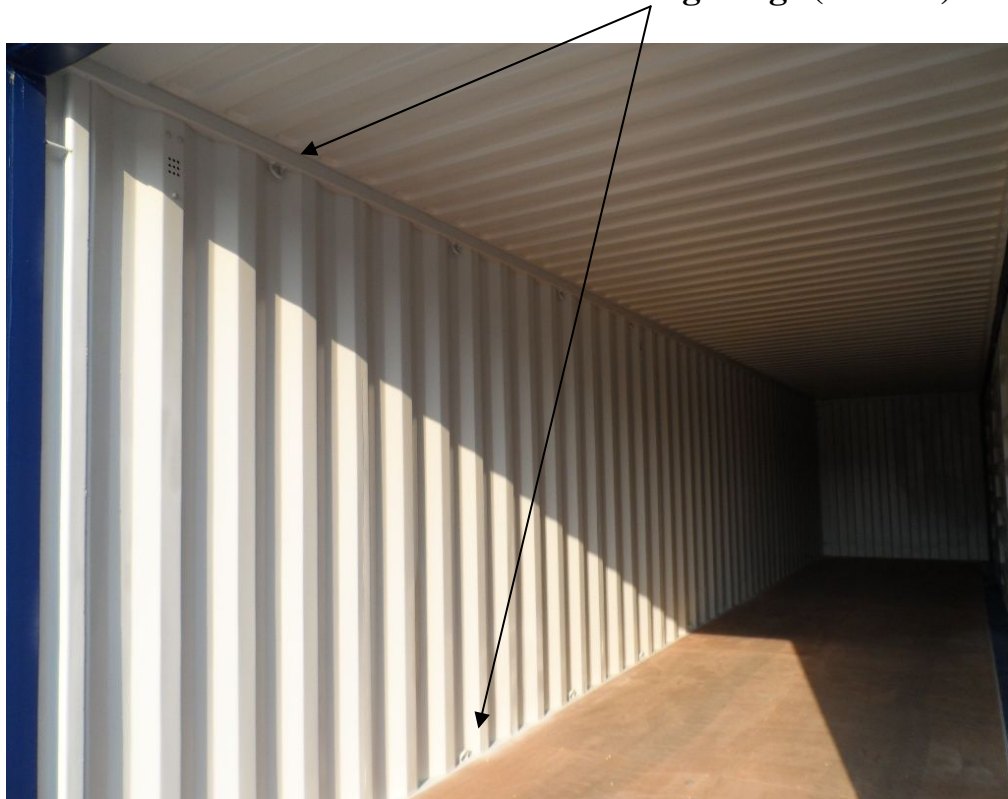
Front End Wall



Rear End Door



Internal Left Side Wall With Lashing Rings (20 PCS)



Internal Right Side Wall Without Lashing Rings



All Doors Open



Two Middle Side Doors Open



Rear End Doors Open (180 Degrees)



All Side Doors Open With Full Side Access (180 Degrees)



Roof



CSC Plate



Forklift Work in 40'HCOS Container



Dimensions & Ratings

1.External Dimensions:

Length:12192mm / Width:2438mm / Height:2896mm.

2.Internal Dimensions:

Length:12032mm / Width:2287mm / Height:2461mm.

3.End Door Opening Dimensions:

Width:2226mm / Height:2348mm.

4.Side Door Opening Dimensions:

Width:11836mm / Height:2308mm.

5.Internal Cubic Capacity:

67.72 Cubic Meters.

6.Ratings:

Max.Gross Weight: 24000kgs

Max.Payload: 18080kgs

Tare Weight: 5920kgs (Tolerance 2%)

45 Degrees View At Rear End



45 Degrees View At Front End

