

20' DD8C (2 X 10') (CPI)

Side View



Rear End



Front End



Rear End Doors Open



All Doors Open



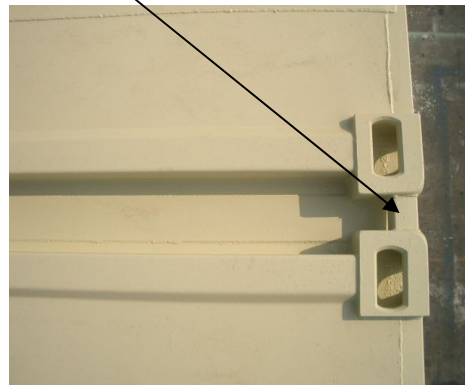
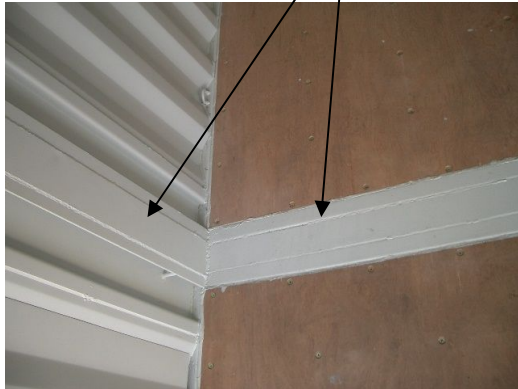
Front End Panel Attached To Side Panel



Internal View



Cut Out Cover Plate And Connectors To Make 2 X 10'



Remove Front Panel By Grinding Off Welding Beads



Width Between Internal Corner Post Was Upgraded From 2308MM To 2332MM



Final Product (2 x 10')



Dimension And Ratings(20'DD8C)

/

Dimensions And Ratings(10'containers)

External Dimensions:

/

External Dimensions:

Length:6058mm/Width:2438mm/Height:2591mm

Length:2991mm/Width:2438mm/Height:2591mm

Internal Dimensions:

/

Internal Dimensions:

Length:5844mm/Width:2350mm /Height:2390mm

Length:2840mm/Width:2350mm/Height:2390mm

Door Opening Dimensions:

/

Door Opening Dimensions:

Width:2340mm/Height:2280mm

Width:2342mm / Height:2280mm

Internal Cubic Capacity:

/

Internal Cubic Capacity:

32.8 Cubic Meters

15.95 Cubic Meters

Width Between Internal Middle Corner Posts: /

2332mm

Width Between Internal Middle Corner Posts:

n/a

Height Between Internal Middle Top & Bottom Rails: /

2306mm

Height Between Internal Middle Top & Bottom Rails:

n/a

Ratings:

/

Ratings:

Max.Gross Weight: 30480kgs

Max.Gross Weight: 10160kgs

Max.Payload: 27730kgs

Max.Payload: 8860kgs

Tare Weight: 2750kgs

Tare Weight: 1300kgs