

## 20'HCPW

Side View (5 PCS Of Ventilators Per Side Wall)



Rear End Doors (4 PCS Of Ventilators)



**Rear End View**



**Front End View**



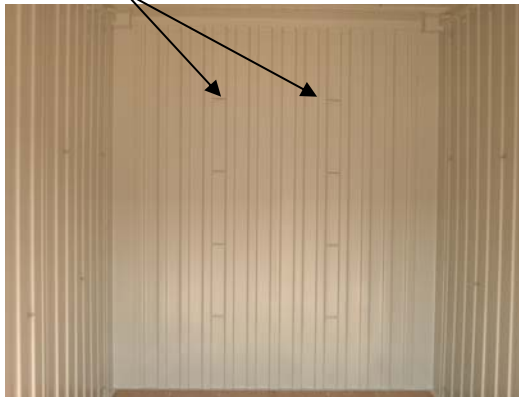
**End Doors Open**



**Internal View**



**Recessed Tie-Rails Front Wall (8 PCS)**



**Recessed Tie-Rails Roof (8 PCS)**



**Recessed Tie-Rails Internal Side Walls (24 PCS Per Side Wall)**



**Lashing Rings / Top Side Rails (5 PCS Per Top Side Rail)**



**Full Length Tie-Rails (3PCS Per Side Wall & Front Wall / 2PCS On The Roof)**



**Dimensions & Ratings**

**External Dimensions:**

Length:6058mm / Width:2438mm / Height:2896mm

**Internal Dimensions:**

Length:5925mm / Width:2390mm / Height:2695mm

**End Door Opening Dimensions:**

Width:2358mm / Height:2585mm

**Internal Cubic Capacity:**

38.1 Cubic Meters

**Ratings:**

Max.Gross Weight: 24000kgs

Max.Payload: 27980kgs

Tare Weight: 2500kgs