

## **20' OTHT (CPI)**

**Side View With Roof Locking Device**



**Roof Locking Device (Total Six Sets At Both Sides)**



**Front End With Ladder**



**Rear End Door**



### Hard Metal Roof With Four Lift Rings



### Internal Normal Lashing Rings (20 PCS)



**One Adjustable Roof Bow**



**Flat Steel Floor**



## CSC Plate



## End Doors Open

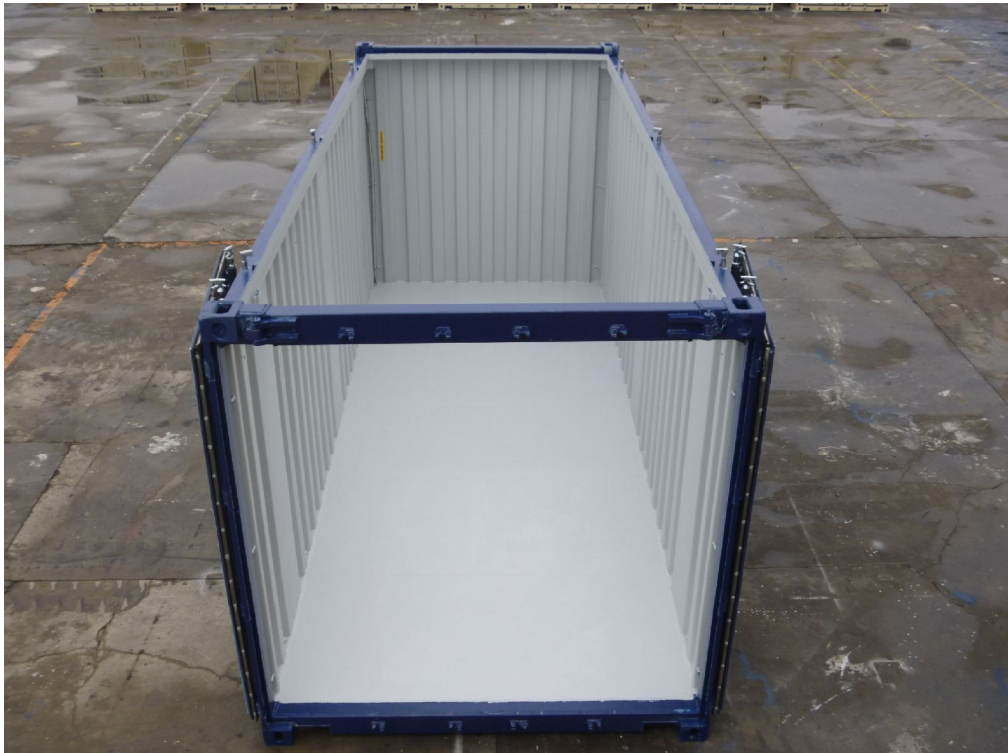




## Hard Metal Roof Removal



## Hard Metal Roof Removal & Door Open



## Hard Metal Roof & Door Header Removal



### Dimensions & Ratings

**1.External Dimensions:**

Length:6058mm / Width:2438mm / Height:2591mm.

**2.Internal Dimensions:**

Length:5898mm / Width:2334mm / Height:2396mm.

**3.End Door Opening Dimensions:**

Width:2340mm / Height:2270mm.

**4.Metal Roof Opening Dimensions:**

Width:2212mm / Length:5570mm.

**5.Internal Cubic Capacity:**

33.0 Cubic Meters.

**6.Ratings:**

Max.Gross Weight: 30480kgs

Max.Payload: 27630kgs

Tare Weight: 2850kgs